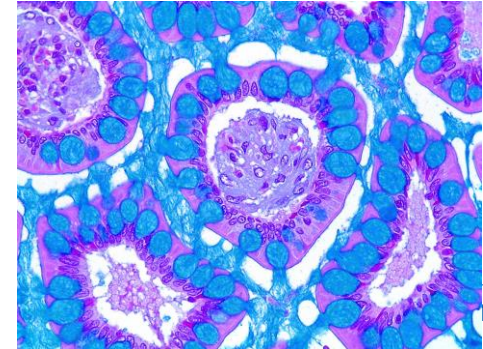


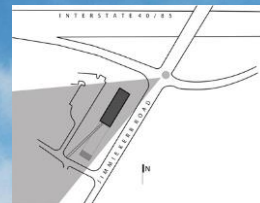


Biotechnology Center of Excellence

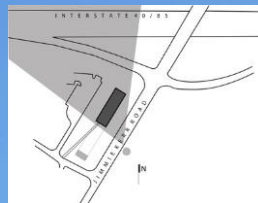
Fall, 2020



view from northeast



view from southeast



view from southwest



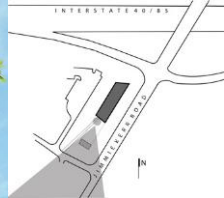
view from plaza seating

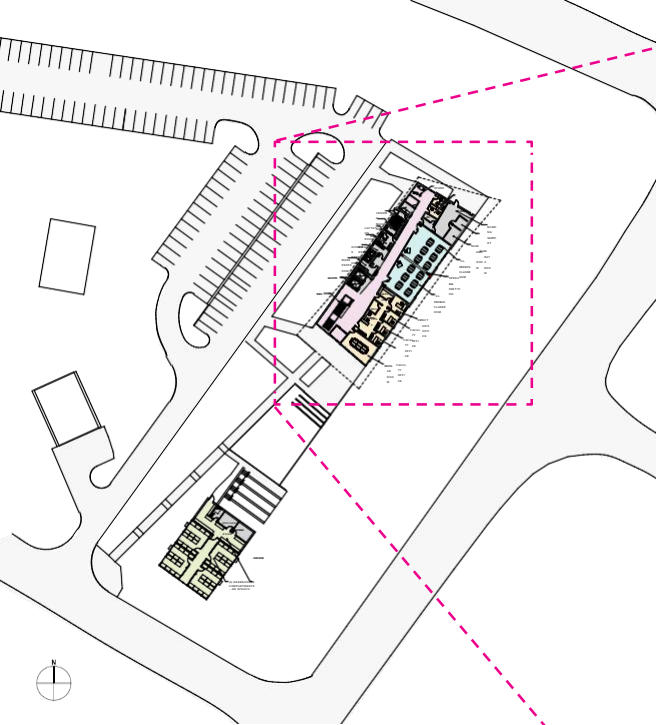




view from terraced seating

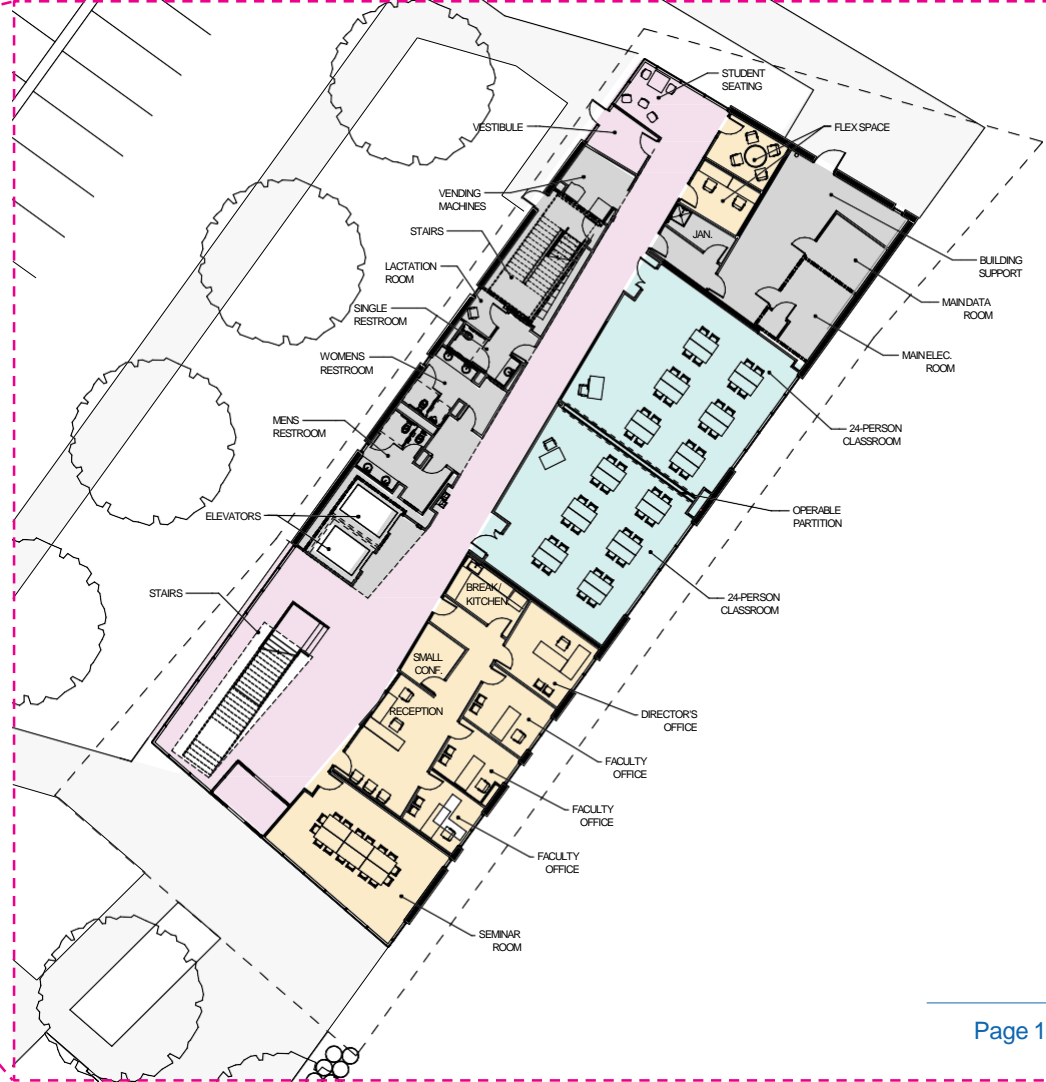
view from entry looking south

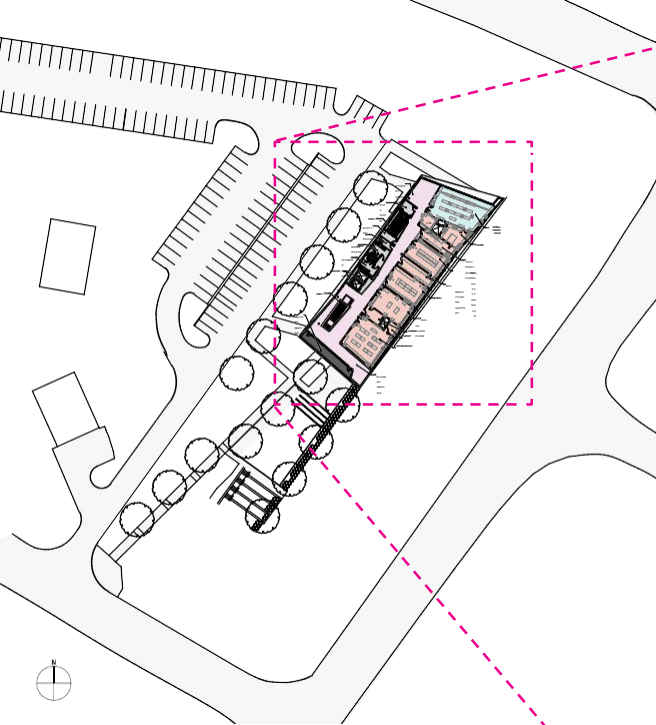




first floor

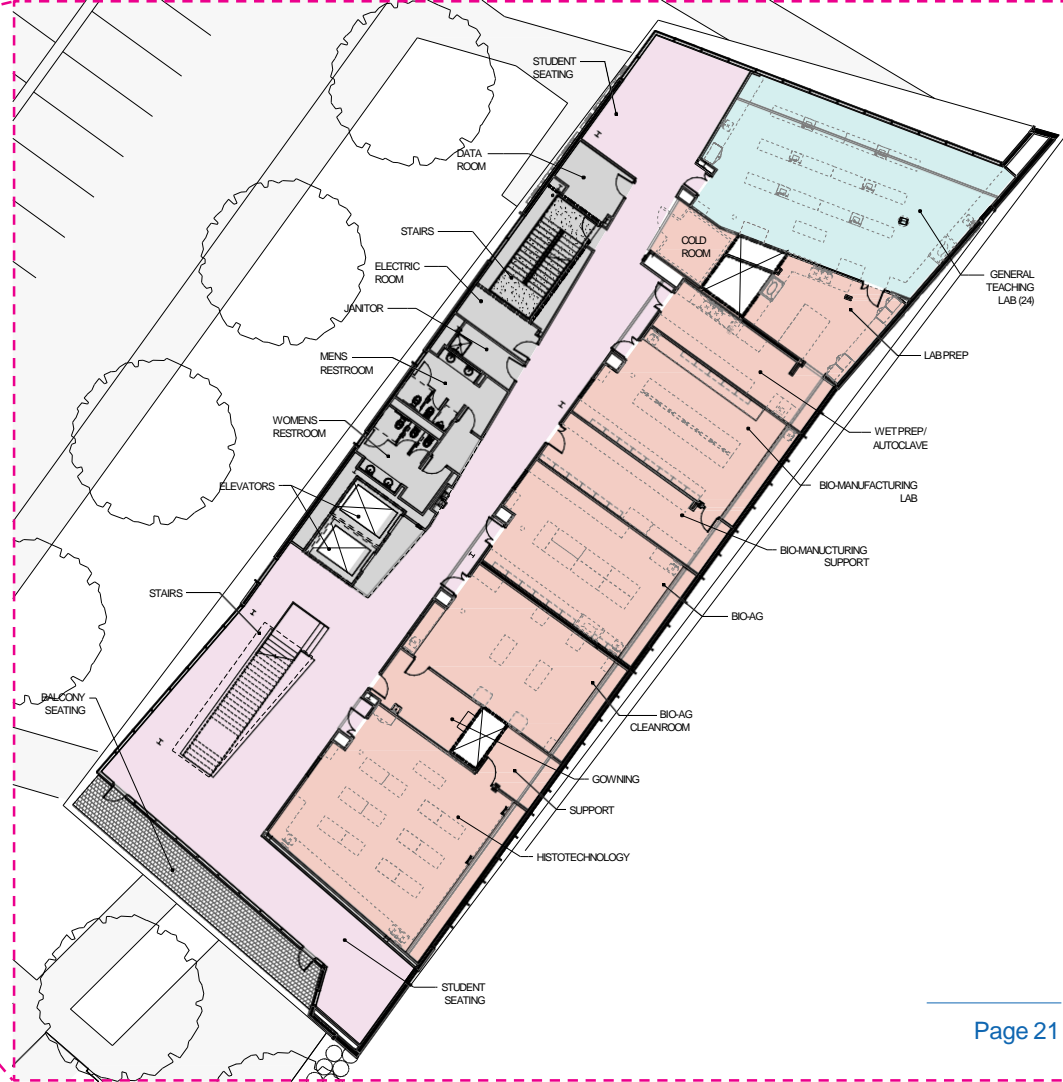
- STUDENT SPACE
- GENERAL
- CLASSROOMS
- GREENHOUSE
- OFFICE

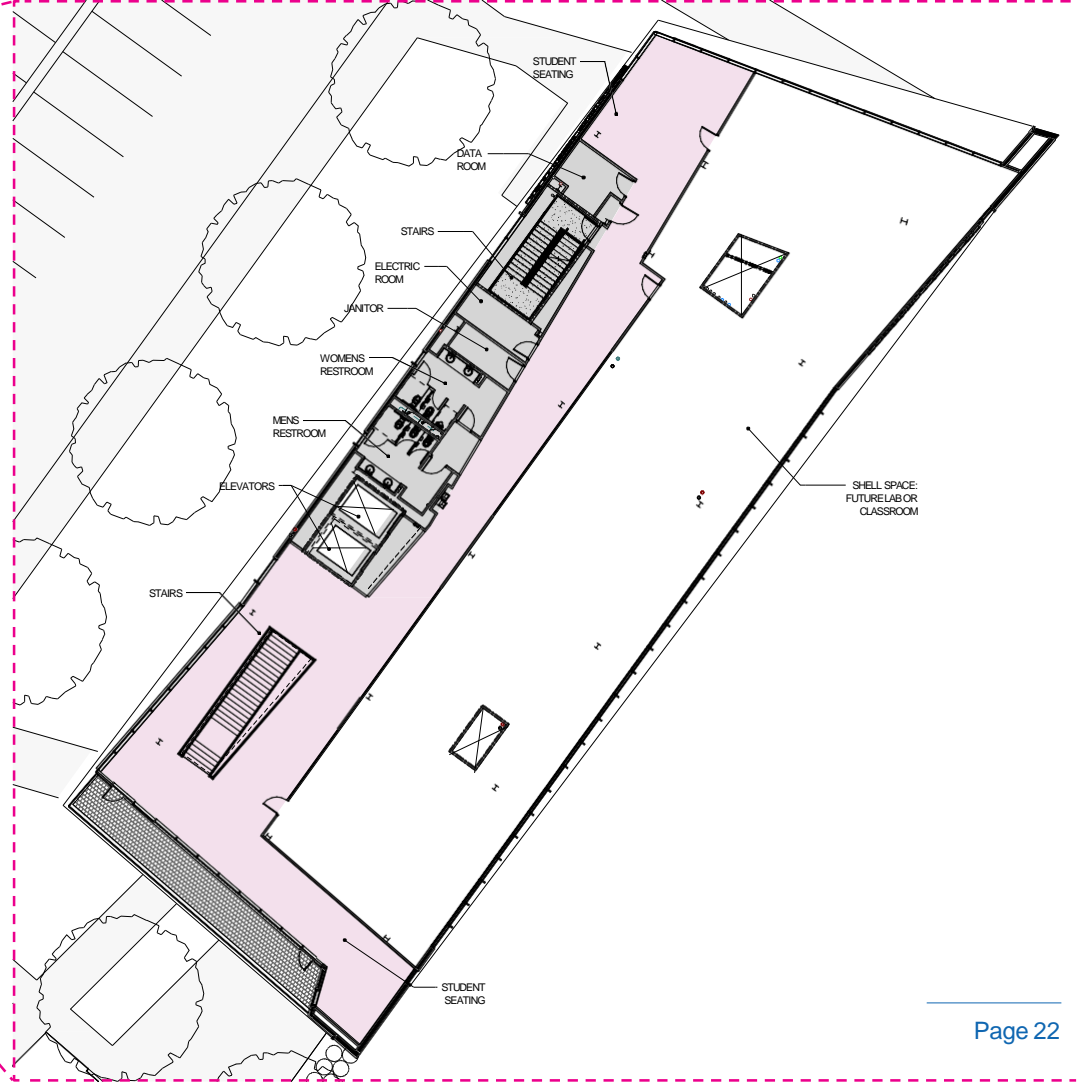
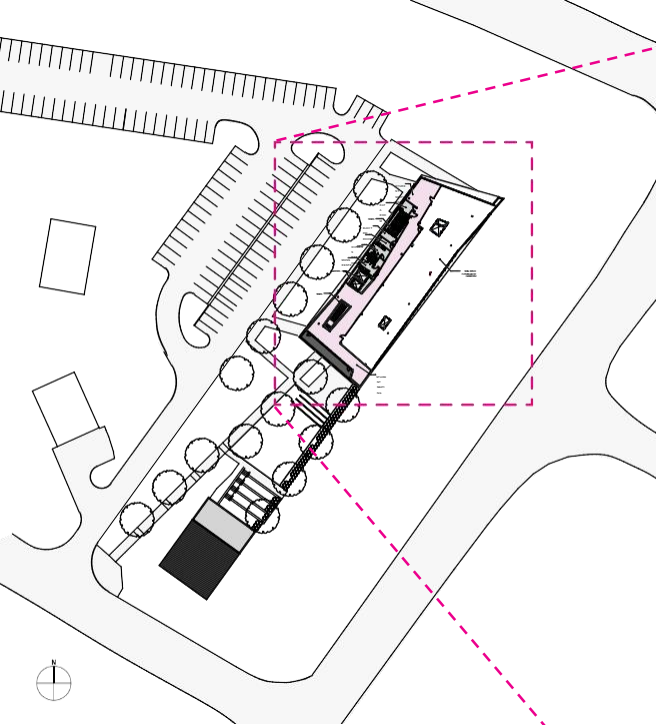




second floor

- STUDENT SPACE
 - GENERAL TEACHING
 - LAB
- DEDICATED TEACHING LABS





third floor

- STUDENT
- SPACE SHELL
- SPACE

First Floor Lobby



Second Floor South Lobby



Second Floor North Student Space



For More Information and/or Discuss Donations/Leads, etc.

Please contact:

Carolyn Rhode

Executive Director at ACC Foundation

Phone: 336-506-4128

Email: Carolyn.Rhode@AlamanceCC.edu

Yonnie Butler

Executive Director, Biotechnology Center of Excellence

Phone: 336-506-4414

Email: Yonnie.Butler@AlamanceCC.edu
